

DURHAM ENGINEERS CLUB

FIELD TRIP TO DUKE UNIVERSITY ON SEPTEMBER 19, 2024, 5:30 PM – 7:00 PM

Location:

East Duke Building Room 209 – building location is identified by red pin on map below.

Address: 1304 Campus Drive, Durham, NC 27708

Coordinates: 36.00486, -78.91415

Capacity: 108 (tiered seating)

Note: No food or beverages are allowed in the auditorium.

Details: <https://25live.collegenet.com/pro/dukesched#!/home/location/626/details>

Parking:

Epworth (coordinates: 36.00644, -78.91272) or Blackwell (coordinates: 36.00551, -78.91577)

Lots on East Campus as shown in blue on the map below.

Note: East Campus lots (with the exception of reserved spaces) are open to the community after 5:00 PM on weekdays.



Preliminary Agenda:

1. Start at 5:30 PM - Welcome, brief review of their business items, introduction of speakers – Jay Stobbs, Durham Engineers Club/Mike D – 5 minutes
2. Overview of East Campus master plan – Adem G – 5 minutes
3. Lilly Library program and architectural design – Lauren R - 5 minutes
4. Lilly Library MEP design – Paul Kitchens, Newcomb & Boyd - 5 minutes [or should we do this in-house?]
5. Lilly Library Civil design – James Eason, McAdams – 5 minutes [or should we do this in-house?]
6. Lilly Library Utility design – Russell T and/or Darin S – 5 minutes
7. Lilly Library construction logistics/schedule – Dudley W and/or LeChase – 5 minutes
8. East Campus Landscape design overview – Mark H – 5 minutes
9. East Campus Utilities design overview – Ryan L – 5 minutes
10. East Campus construction logistics/schedule – Dudley W, Heidi J and/or LeChase – 5 minutes
11. Q&A – 20 minutes (also to be asking questions during presentations) – conclude by 6:40 PM

12. Walking tour around Lilly and East Campus construction sites – 20 minutes – finish at 7:00 PM
Note: Average of 5 slides per presenter.

Proposed Presenters:

- Michael Dausch, P.E., Director, Duke Office of Project Management
- Adem Gusa, AICP, Director, Duke Office of Planning and Design
- Mark Hough, FASLA, University Landscape Architect
- Heidy Jaramillo, Project Manager, Duke Office of Project Management
- Ryan Lavinder, P.E., Civil Engineer, Duke Utility and Engineering Services
- Lauren Rockart, AIA, Duke Consulting University Architect
- Darin Smith, Assistant Director, Duke Utility and Engineering Services
- Russell Thompson, Executive Director, Duke Utility and Engineering Services
- Dudley Willis, Assistant Director, Duke Office of Project Management
- James Eason, P.E., Group Manager, McAdams Engineering
- Paul Kitchens, P.E. Partner, Newcomb & Boyd Engineers

Draft Synopsis of Tour:

Duke is initiating two projects on its East Campus, one to renovate and expand the Lilly Library and upgrade the associated utilities, and the other to upgrade the landscaping and infrastructure in the main East Campus Quad. The existing Lilly Library (31,500 GSF built in 1927) is in need of both renewal and expansion. The building was originally designed to service 600 students, but now serves over 1,750. The original design does not meet current needs for seating, study spaces, collaboration spaces, research services, a testing facility, and ADA accessibility. In addition, the mechanical, electrical, plumbing and fire protection systems are outdated.

A renovated and expanded (24,800 GSF addition) Lilly will dramatically improve the academic experience and community on East Campus. The proposed commons in the Lilly addition is intended to become the crossroads for East Campus, encouraging informal interactions between faculty and students. The charm of the most beloved spaces will be retained, while modernizing the aging building. The spaces will be better organized and efficient, building systems upgraded, and the entire facility will be code compliant and accessible. The design and construction will be in accordance with Duke's High-Performance Building Framework for sustainability.

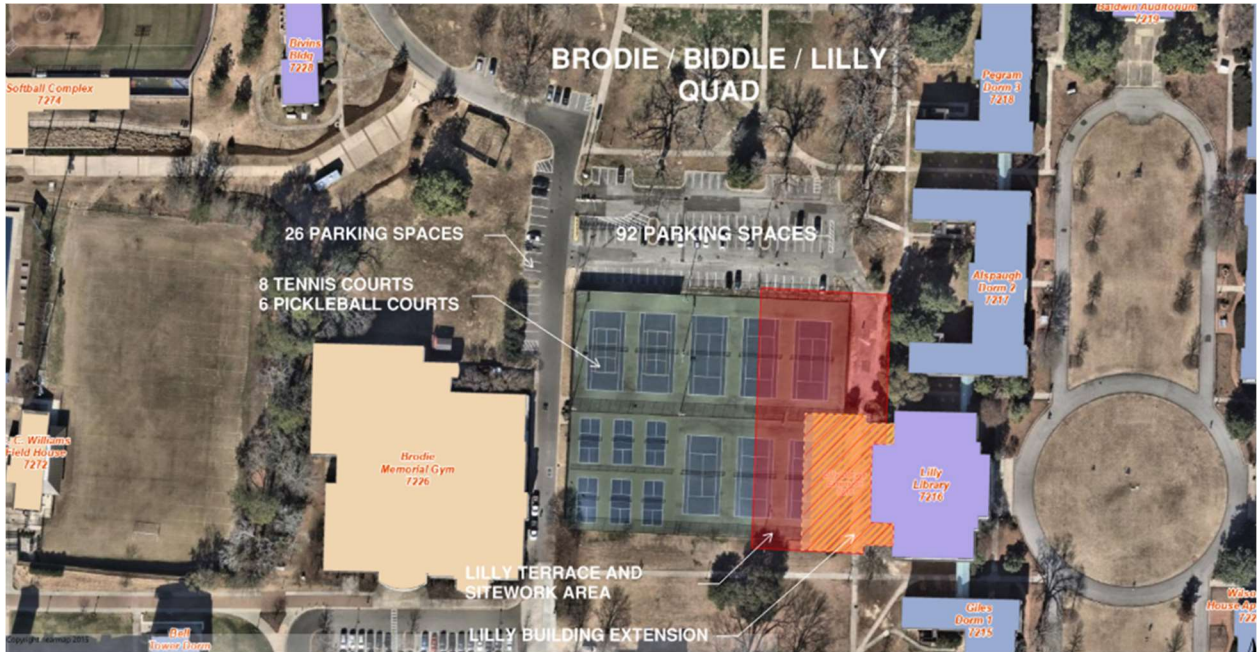


Lilly Library Addition – West Elevation



Lilly Library Addition – Northwest Corner Elevation

The existing tennis and pickleball courts located between Lilly and Brodie Gym will be removed and a new lawn and landscaped area will be constructed. New tennis and pickleball courts will be constructed on the west side of Brodie Gym (between Brodie and the Field Hockey Field). Central utility infrastructure for chilled water, high voltage, stormwater and sewer will be installed on the west side of Lilly with capacity to serve Lilly as well as other facilities on that side of campus. The planned project schedule is to start construction in summer of 2024 and complete the work in spring of 2026.

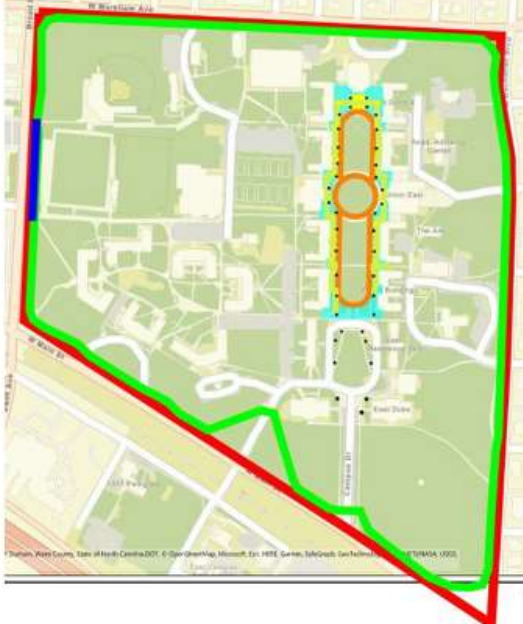


Lilly Library Site Impacts

The East Campus Landscape and Infrastructure Renovation will include extensive replanting and irrigation work in the zone between the curb and the buildings of the East Quad. The Olmsted Brothers (landscape architects) designed the East Quad landscape in the late 1920s. Although early photographs show an attractive East Quad landscape, overuse, lack of irrigation, and pedestrian foot traffic gradually denuded the area between the curb of the main central walkway and the face of the buildings. This is

the first comprehensive restoration or enhancement of the East Campus landscape and this project seeks to implement significant improvements to its appearance and health.

Duke East Campus Landscape and Infrastructure Renovation

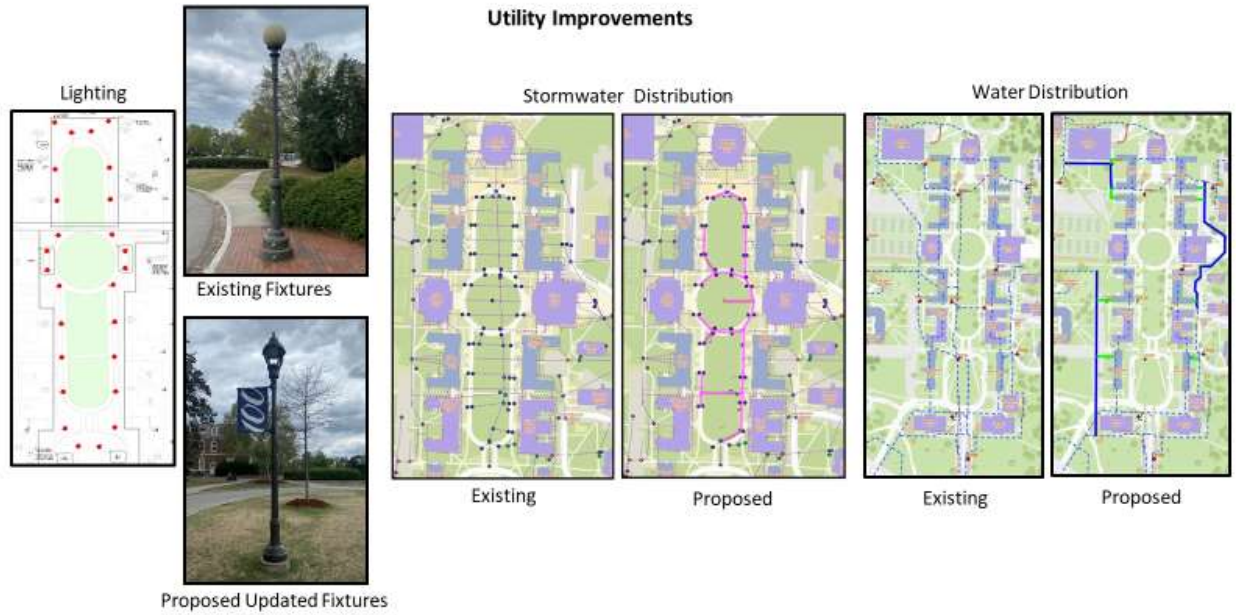


Project Scope of Work:

- Quad Planting/Irrigation** - between the curb and the buildings to add visual interest and direct pedestrians to use the primary walkway.
- Quad Paving/Brick** - remove and reuse existing brick pavers to improve pedestrian entries to building and add seating areas. Resurface the asphalt "drive" and replace the granite curbs and brick gutters.
- Quad Water and Stormwater Distribution** – replace systems.
- Quad Exterior Lighting** – improve and update to campus standards.
- Interior Gravel Walking Path** – added stone and graded – work completed.
- Broad St Wall/Landscape** – construct the missing portion of granite wall between Williams Field and Broad Street.
- Perimeter Landscape** – replace damaged sidewalks, improve street trees, grading, and planting.

East Campus Landscape and Infrastructure Renovation – Scope of Work

New plantings will add visual interest and direct pedestrians to use the primary walkway as originally intended. Existing brick pavers installed in the 1990s within these planting beds will be removed, except where brick pads for student benches currently exist. Reclaimed brick will be used to add more seating areas where needed and to improve the entries of the three iconic buildings (Baldwin, Lilly Library and George and George-Frank Wall Center for Student Life) with generous paved plazas in place of existing concrete. The primary asphalt walkway will also be improved, with vehicular-rated bricks in lieu of the asphalt in front of the three buildings. The landscape on the outside of the perimeter campus wall will be enhanced and the missing portion of the wall completed beside Williams Field adjacent to Broad Street. Utility scope items include updating all exterior lighting fixtures to comply with campus standards and installing new domestic water and storm water systems.



East Campus Infrastructure Improvements